



COVID-19 RESPONSE

The NM Public Education Department released their updated COVID-19 Response Tool Kit with guidelines for opening schools.

KEY POINTS

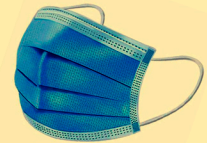
A COPY OF THE FULL TOOL KIT CAN BE FOUND HERE:



We will continue to follow all state guidelines and requirements. We will continue to post other guidance as it becomes available.

Brian Luck
Superintendent
Roswell Independent
School District

All individuals in Elementary School regardless if they have been vaccinated or not must wear a mask while in the school building, on school transportation, or at an indoor sponsored event.



Secondary school students, staff, and volunteers do not have to wear a mask with documentation of full vaccination.

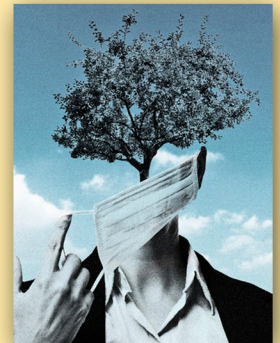


Secondary school students, staff, and volunteers who are not fully vaccinated must wear a mask while in the school building, on school transportation, or at any indoor event.



Mask are not required outdoors for any individual at any level.

For sporting events unvaccinated spectators are required to wear mask indoors.



Schools must identify the process for ensuring compliance with mask requirements, including posting signage in school facilities, announcing mask requirements at school events, and other necessary means for enforcement.